

Who is CPS Energy?

CPS Energy is the nation's largest municipally owned energy utility providing both natural gas and electric service. We serve more than **765,000** electric customers and **335,000** natural gas customers in and around San Antonio, the nation's seventh largest city. Constant innovation and expansion reduces rates – our customers' combined energy bills rank among the lowest of the nation's 20 largest cities – while generating **\$2.86 billion** in revenue for the City of San Antonio over more than seven decades.

CPS Energy commits millions of dollars to energy efficiency rebates and programs for our customers. Our Save for Tomorrow Energy Plan (STEP) looks to reduce our community's demand for electricity by 771 megawatts (MW) – the output of a large power plant – by 2020.

As part of San Antonio's **New Energy Economy**, we're also investing in innovative technologies that will:

- Help customers use energy more wisely and lower their bills
- Create jobs and educational investments
- Leverage valuable economic development opportunities for our community's future
- Protect the environment

CPS Energy's goal is to provide reliable energy in an environmentally responsible way. This brochure is a first step in notifying the public of this project in an effort to work together to achieve that goal. If outages are necessary or the scope of the project changes, the public will be notified via letter and/or door hanger. If you have any questions regarding the project please contact JJ Hernandez.

How can you follow the progress of this project?

The CPS Energy project team will post project information on the CPS Energy website at www.cpsenergy.com. (search: Shepherd)

Who can answer your questions?

The website will include regular updates on the project as steps are completed. Also, you may call, write or e-mail to:

CPS Energy

JJ Hernandez, Project Manager
Shepherd Substation &
Transmission Project

Mail Code 100311
P.O. Box 1771
San Antonio, Texas 78296-1771
(210) 353-4531
JJHernandez1@cpsenergy.com



SHEPHERD

SUBSTATION AND TRANSMISSION PROJECT



*Typical
Transmission
Structure*

INFORMATION ABOUT THE SHEPHERD SUBSTATION & TRANSMISSION PROJECT

What is the Shepherd Substation & Transmission Project?

CPS Energy is planning to construct a new electric substation and high-voltage transmission line in the southwest area of San Antonio near Shepherd and Pearsall Roads.

A substation is a local power hub or distribution point for electricity. This substation will improve reliability and provide additional electric capacity to homes and businesses in the area. The substation will be supplied from a new extension of an existing high-voltage transmission line illustrated in the **Study Area Map**. The substation will supply electric power to homes and businesses in the immediate area through lower-voltage distribution lines.

The substation requires approximately 6 acres; the transmission right of way would be approximately 100 feet wide.

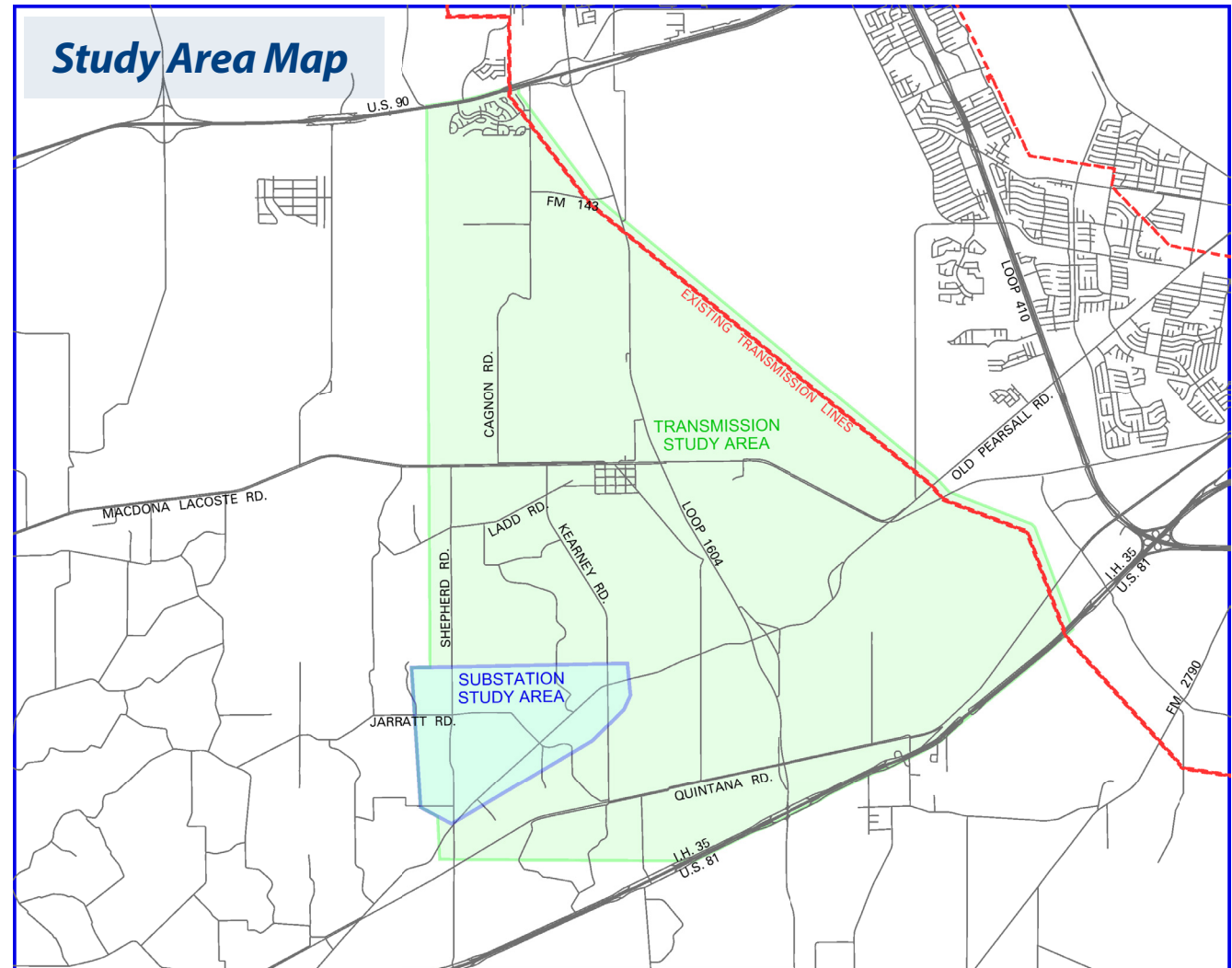
Construction is expected to begin Fall of 2017.

How might this project affect you?

When a proposed site is identified, CPS Energy will contact individual land owners regarding acquisition of property for the substation and easements for power lines entering and exiting the substation. In addition, we will strive to minimize disruptions to landowners and their properties.

Why is this project needed?

The new substation is needed to maintain electrical reliability and improve this area's electric system with shorter circuits that reduce exposure to outages. The new circuits also create strong backbones and sufficient field ties to adjacent substation circuits that will prevent major loss of customer load in faulted conditions. The new substation will help relieve load from other surrounding substations and reduce the risk of overloading circuits. The new substation is needed to meet an increasing demand for electricity in the area.



**Typical
Substation**

